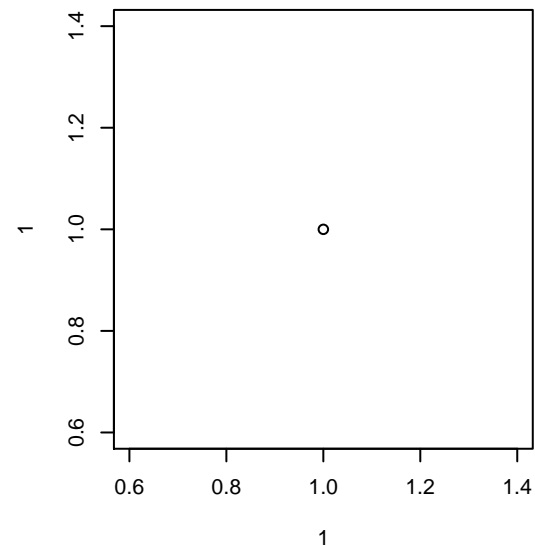


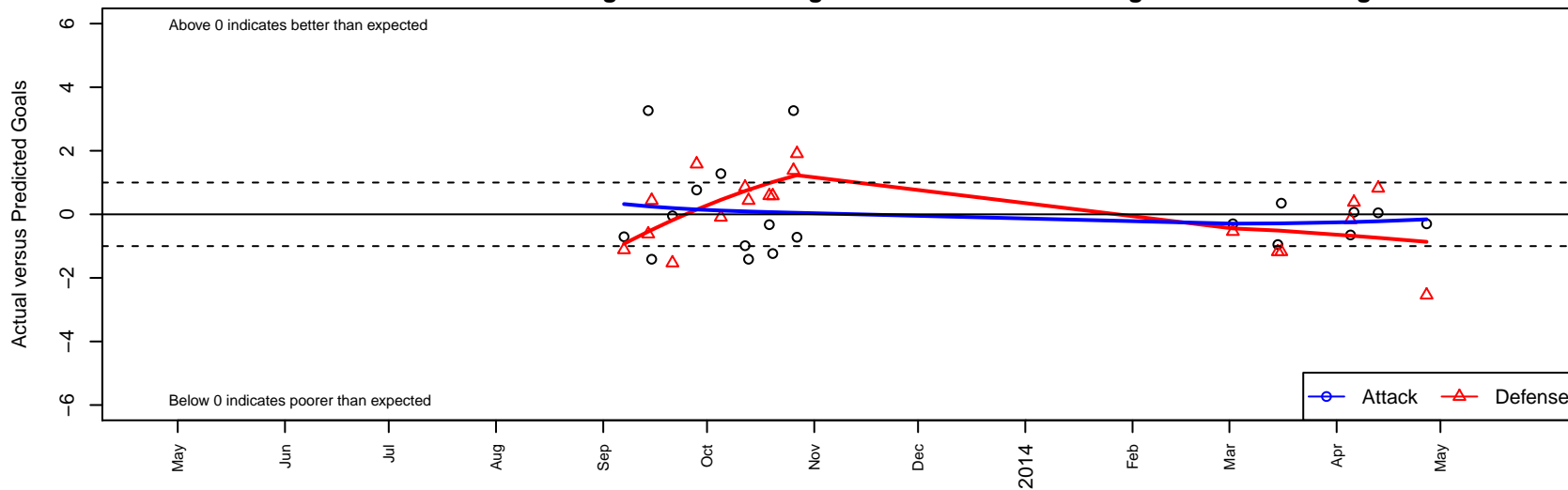
# Foothills SC Lightning Green G01

Foothills SC  
 Portland, OR  
 G01 total strength=287  
 attack=0.22 defense=0.13  
 fall league = OPL Third Division U12, Spr OPL  
 alt names used:  
 Foothills SC Lightning Green

Venues played:  
 OPL Third Division U12  
 Spr OPL Mt. Baldy Division U12



**Foothills SC Lightning Green G01**  
 Dots are actual minus expected GF (blue circles) and GA (red triangles).  
 Blue line is smoothed change in attack strength. Red is smoothed change in defense strength.



	<b>date</b>	<b>home</b>		<b>away</b>		<b>venue</b>	<b>pred.home</b>	<b>pred.away</b>
7818	2014-04-27	Foothills SC Lightning Green G01	1	Crossfire OR SSC Storm G01	4	Spr OPL Mt. Baldy Division U12	1.30	1.46
7720	2014-04-13	Foothills SC Lightning Green G01	1	Pacific FC Force G01	1	Spr OPL Mt. Baldy Division U12	0.95	1.82
7622	2014-04-06	Foothills SC Lightning Green G01	1	Aloha United SC Earthquakes G01	1	Spr OPL Mt. Baldy Division U12	0.93	1.38
7587	2014-04-05	Crossfire OR WUSC Levante Navy G01	3	Foothills SC Lightning Green G01	0	Spr OPL Mt. Baldy Division U12	2.82	0.65
7436	2014-03-16	Crossfire OR WUSC Levante Navy G01	4	Foothills SC Lightning Green G01	1	Spr OPL Mt. Baldy Division U12	2.82	0.65
7402	2014-03-15	Pacific FC Force G01	3	Foothills SC Lightning Green G01	0	Spr OPL Mt. Baldy Division U12	1.82	0.95
7242	2014-03-02	Crossfire OR SSC Storm G01	2	Foothills SC Lightning Green G01	1	Spr OPL Mt. Baldy Division U12	1.46	1.30
6277	2013-10-27	Capital FC Timbers White G01	0	Foothills SC Lightning Green G01	0	OPL Third Division U12	1.91	0.72
6207	2013-10-26	Foothills SC Lightning Green G01	6	Crossfire OR LOSC Thunder G01	0	OPL Third Division U12	2.74	1.38
6135	2013-10-20	THUSC Lithium G01	1	Foothills SC Lightning Green G01	0	OPL Third Division U12	1.58	1.23
6049	2013-10-19	OSA Girls on Fire G01	0	Foothills SC Lightning Green G01	4	OPL Third Division U12	0.59	4.33
5960	2013-10-13	HSC Storm G01	0	Foothills SC Lightning Green G01	2	OPL Third Division U12	0.44	3.41
5897	2013-10-12	Foothills SC Lightning Green G01	4	Foothills SC Lightning White G01	0	OPL Third Division U12	4.99	0.85
5702	2013-10-05	Foothills SC Lightning Green G01	2	Capital FC Timbers White G01	2	OPL Third Division U12	0.72	1.91
5533	2013-09-28	Foothills SC Lightning Green G01	2	THUSC Lithium G01	0	OPL Third Division U12	1.23	1.58
5394	2013-09-21	Foothills SC Lightning Green G01	2	PCU White G01	2	OPL Third Division U12	2.05	0.47
5299	2013-09-15	Foothills SC Lightning Green G01	2	HSC Storm G01	0	OPL Third Division U12	3.41	0.44
5226	2013-09-14	Crossfire OR LOSC Thunder G01	2	Foothills SC Lightning Green G01	6	OPL Third Division U12	1.38	2.74
5075	2013-09-07	Westside Timbers Samba G01	2	Foothills SC Lightning Green G01	1	OPL Third Division U12	0.89	1.71